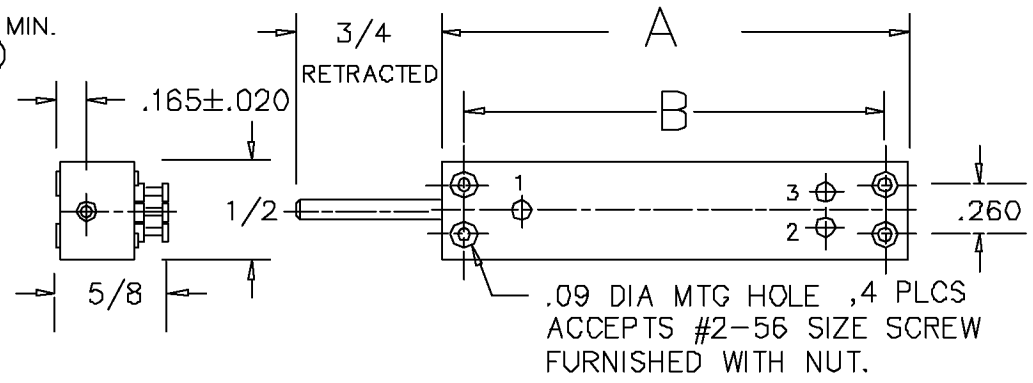


RESOLUTION -----	INFINITE
OUTPUT SMOOTHNESS -----	LESS THAN 0.1% INPUT VOLTAGE
CONTACT RESIST. VARIATION-----	LESS THAN 2%
DIELECTRIC STRENGTH -----	500 VAC MIN.
INSULATION RESISTANCE -----	1000 MEGOHMS AT 500 VDC MIN.
FRICTION -----	1.8 oz. (3.6 oz FOR LCP12-100)
STOP STRENGTH -----	20 OZ. MIN..
RESISTANCE TEMPCO -----	±400 PPM/°C
WEIGHT -----	10 TO 35 GRAMS
LIFE EXPECTANCY -----	20 MILLION STROKES

LCP12-Conductive plastic element
 www.precisionsales.com eparts@precisionsales.com
 610-359-1002

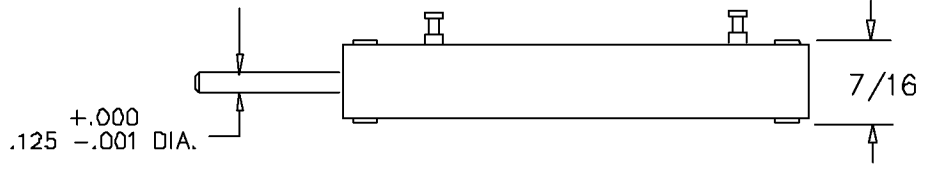
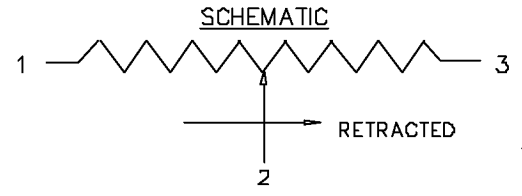


MATERIALS

BODY -----	ALUMINUM(BLACK ANODIZE)
LID -----	HIGH TEMP. PLASTIC
SHAFT -----	STAINLESS STEEL
TERMINALS -----	BRASS GOLD PLATED
RESISTANCE ELEMENT -----	CONDUCTIVE PLASTIC

OPTIONS AVAILABLE

- SPECIAL ENDED SHAFTS
- SPECIAL RESISTANCE VALUES
- SPECIAL LINEARITY
- NON STANDARD STROKES
- SPRING RETURNS



MODEL NO'S.

SHAFT STYLES

LCP12P-(STROKE)-(RES.)	(P)		PLAIN
LCP12A - " "	(A)		#4-40 THREAD
LCP12B - " "	(B)		#5-40 THREAD
LCP12C - " "	(C)		CHAMFERED 0.030" DIA. X 45°
LCP12S - " "	(S)		SPRING RETURN

MODEL NO.	LCP12-12	LCP12-25	LCP12-50	LCP12-76	LCP12-100
STD.RESIS.VALUES	500,1K,2K 5K,10K	500,1K,2K 5K,10K	500,1K,2K 5K,10K,20K	1K,2K,5K 10K,20K	1K,2K,5K 10K,20K
RESISTANCE TOL. LINEARITY (IND.)	±20% ±1.5%	±20% ±1.0%	±20% ±0.7%	±20% ±0.5%	±20% ±0.5%
POWER RATING	0.2 WATT	0.4 WATT	0.7 WATT	1.2 WATT	1.2 WATT
STROKE MECH+.1-.0 STROKE ELECT ±.02	1/2"	1"	2"	3"	4"
'A' DIM ±0.04	1.50	2.00	3.00	4.00	5.00
'B' DIM ±0.02	1.26	1.77	2.75	3.76	4.76

LCP12S-76 OR -100 (RES) RETRACTED LENGTH OF SHAFT TO BE 1 1/4" FOR 3" & 4" STROKE SPRING RETURN.

NOTE: FOR SPRING RETURN WITH THREAD, SEE DWG. LCP12ST